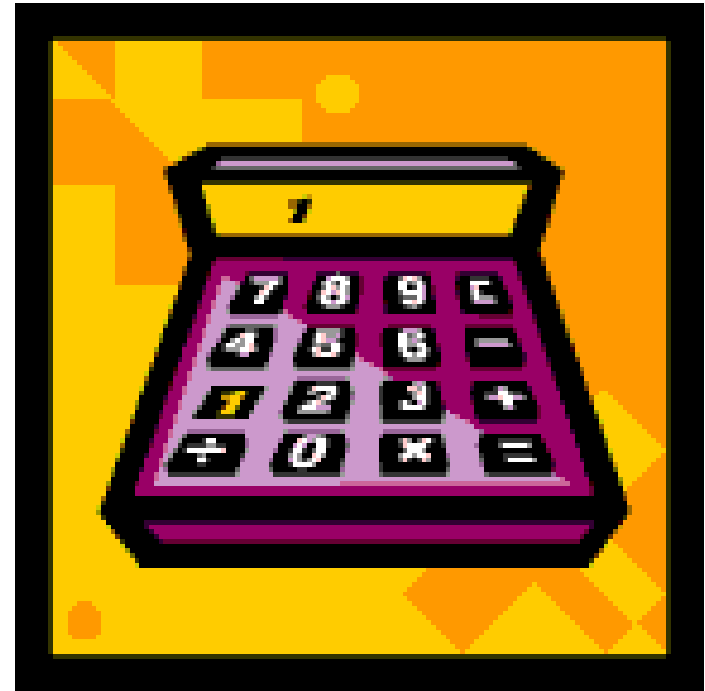


1. THE QUESTION



Using all the student grades on this assignment as the data set, you must decide which of the following methods you would use to determine your individual grade on this project.

Mean, median, mode or range

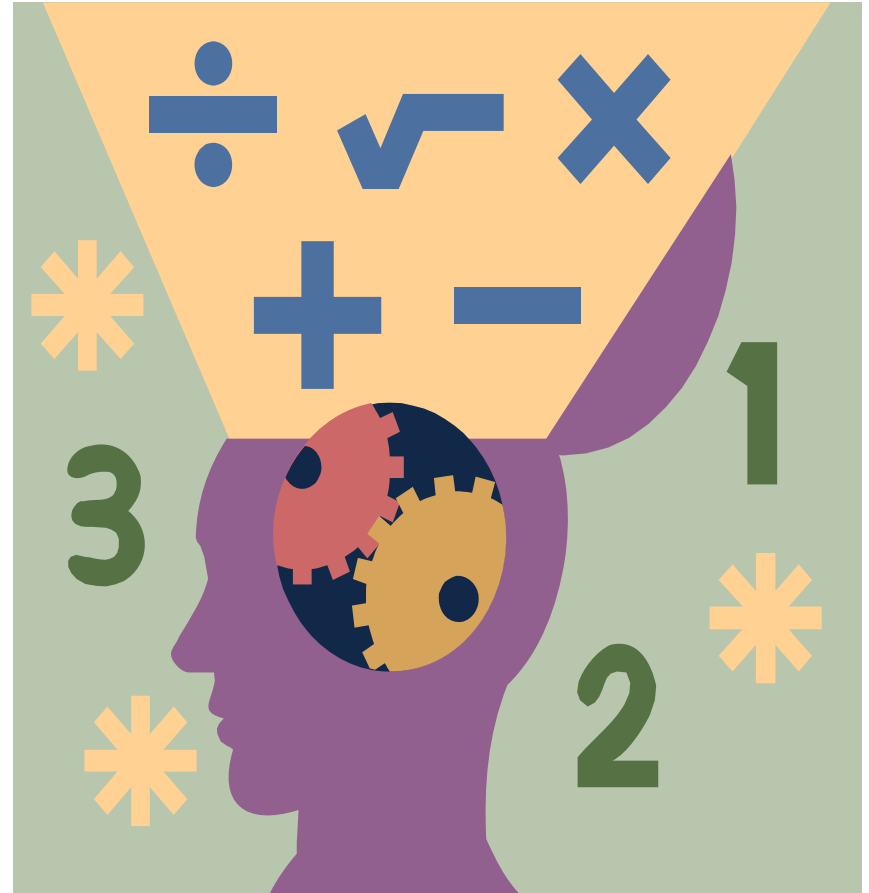


2. INFORMATION SOURCES



The websites listed will help you define mean, median, mode and range.

You can also use your textbook to locate the definitions of mean, median, mode and range.



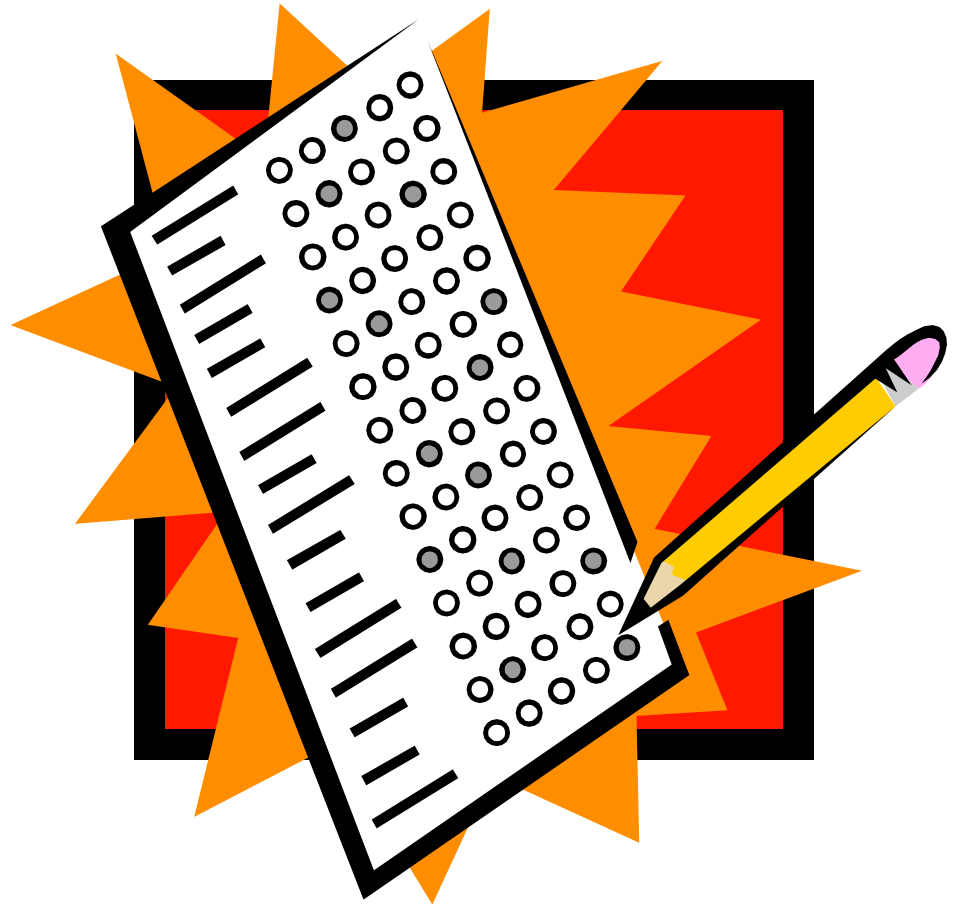
3. THE STUDENT ACTIVITY



You will define mean, median, mode and range.

You will demonstrate your knowledge of mean, median, mode and range by taking the online quiz.

Choose mean, median, mode or range to determine your grade on this assignment.



4. THE ASSESSMENT ACTIVITY



The teacher will grade your definitions and your online quizzes at your computer.

Using these grades as our set of data:

- **The class will divide into groups consisting of those who chose mean, median, mode or range.**
- **Through group discussion the class will decide which method the teacher will use to assign your final grade.**



5. ENRICHMENT ACTIVITIES

Click Here



The following sites provide valuable information about mean, median, mode and range:

- http://www.bbc.co.uk/schools/revisewise/maths/data/12_fact.shtml
- <http://www.manatee.k12.fl.us/sites/elementary/palmasola/mathlabtutstat1.htm>
- <http://www.infomath.com/oltutor/stat/mean.html>

Quizzes:

- <http://www.glencoe.com/sec/math/studytools/cgi-bin/msgQuiz.php4?isbn=0-02-833050-1&chapter=2&lesson=7>
- <http://www.quia.com/rr/51667.html>



| | | | | | |
|----------|----------|----------|----------|----------|----------|
| <u>1</u> | <u>2</u> | <u>3</u> | <u>4</u> | <u>5</u> | <u>6</u> |
|----------|----------|----------|----------|----------|----------|

6. TEACHER SUPPORT MATERIALS

7th Grade MathTEKS

- (12) Probability and statistics. The student uses measures of central tendency and range to describe a set of data. The student is expected to:
- (A) describe a set of data using mean, median, mode, and range; and
 - (B) choose among mean, median, mode, or range to describe a set of data and justify the choice for a particular situation.
- (15) Underlying processes and mathematical tools. The student uses logical reasoning to make conjectures and verify conclusions. The student is expected to:
- (A) make conjectures from patterns or sets of examples and non-examples; and
 - (B) validate his/her conclusions using mathematical properties and relationships.

- **Students will use their data set to determine which method should be used to determine their grade on this project**